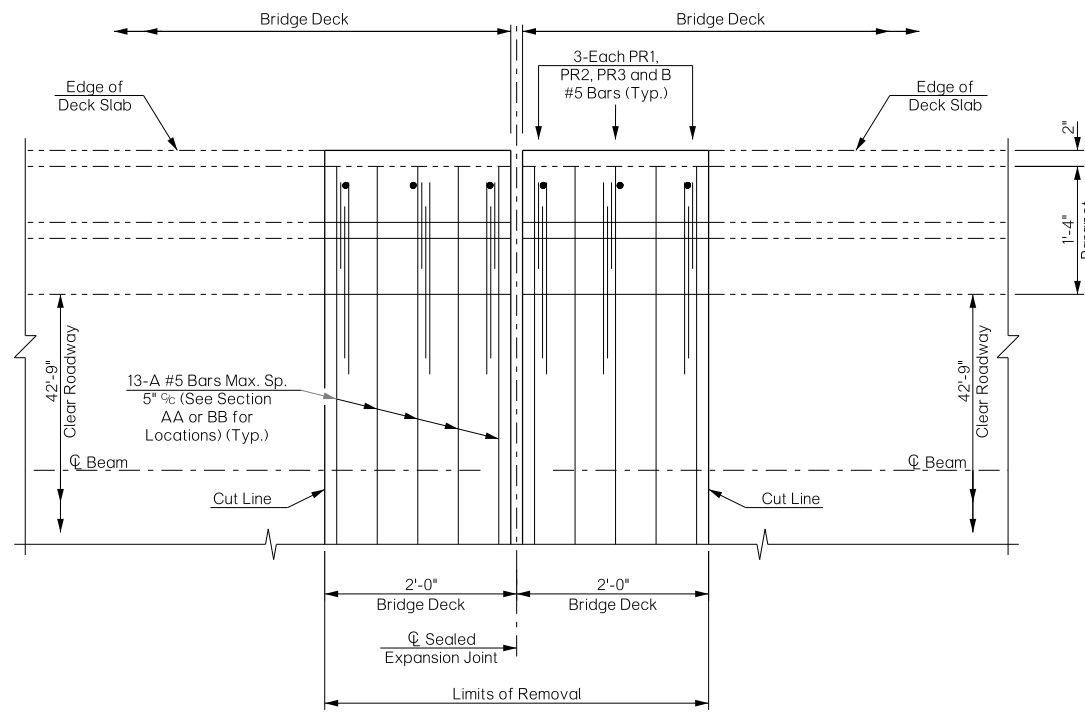
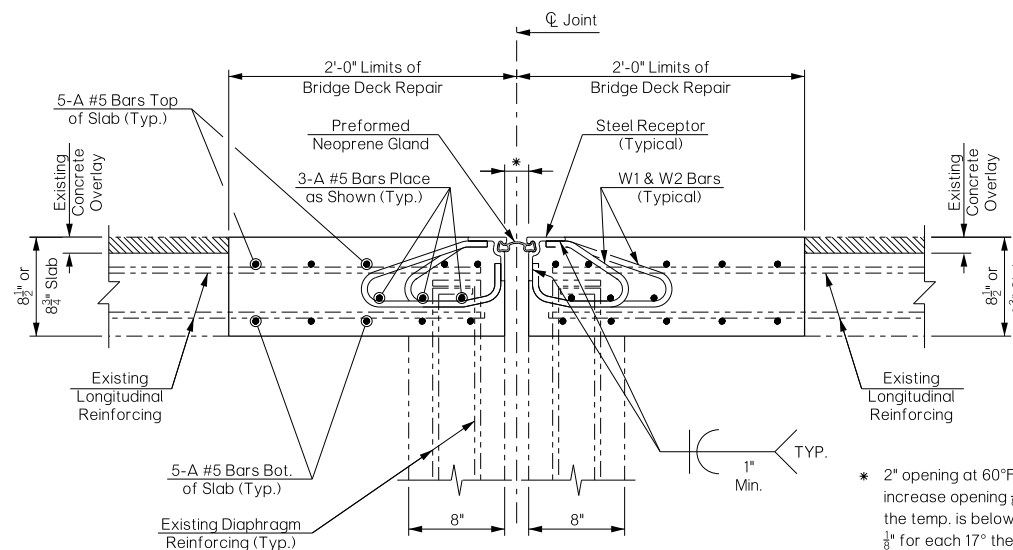


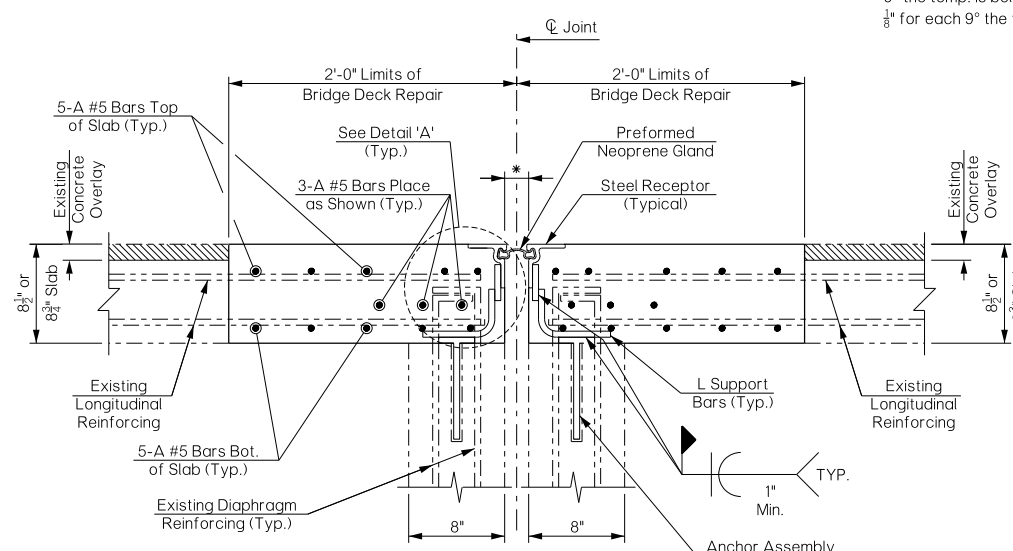
| REVISIONS | | |
|-----------|-------------|------|
| REV. NO. | DESCRIPTION | DATE |
| | | |



NEW JOINT REINFORCING PLAN

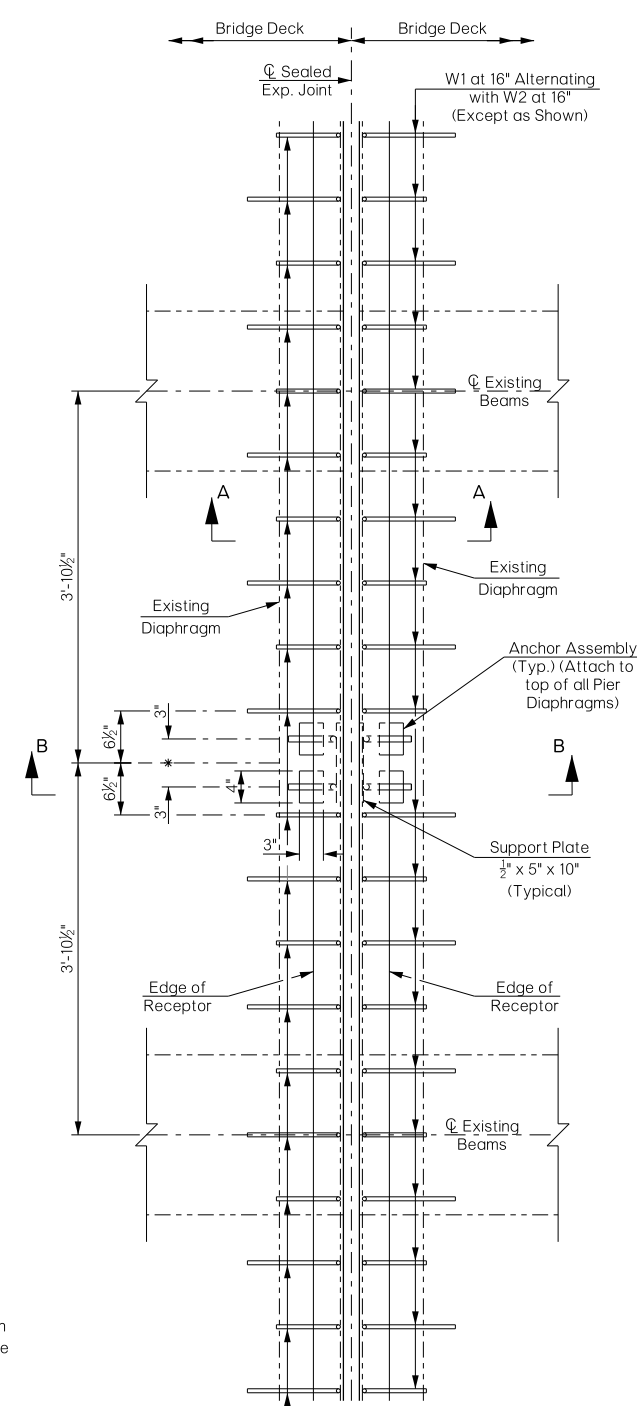


SECTION A-A

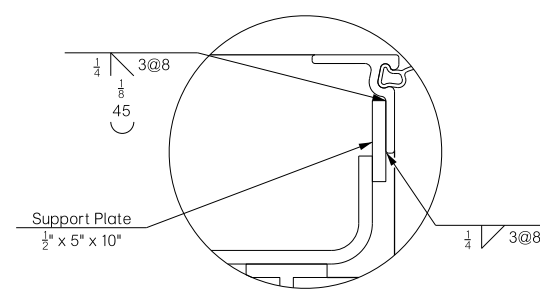


SECTION B-B

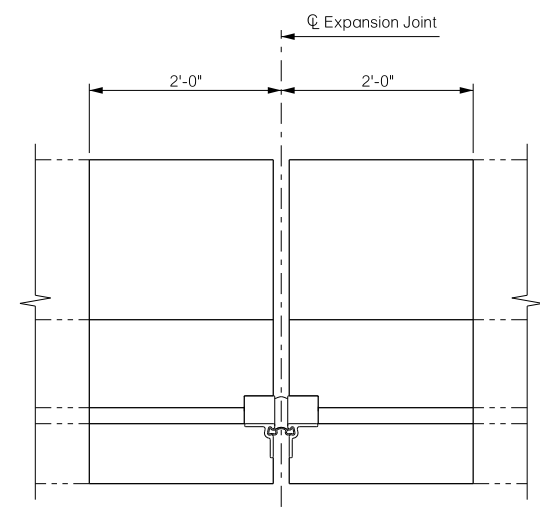
* 2" opening at 60°F. For Pier 1 and 3 increase opening 1/8" for each 17° the temp. is below 60° and decrease 3/8" for each 17° the temp. is above 60°. For Pier 2 increase opening 3/8" for each 9° the temp. is below 60° and decrease 1/8" for each 9° the temp. is above 60°



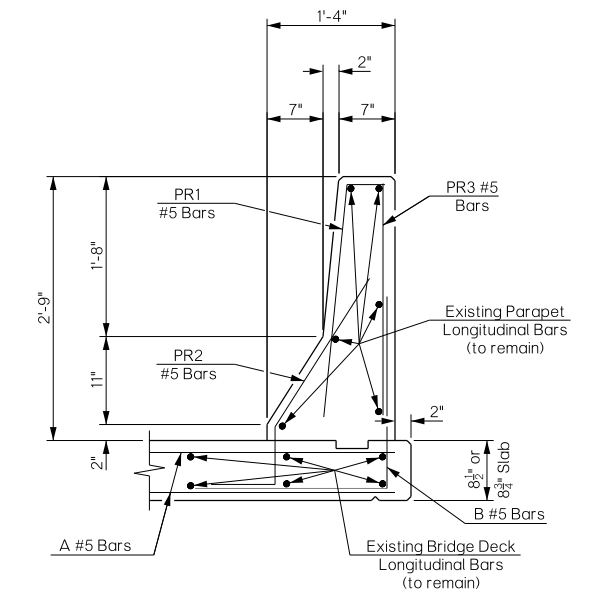
PLAN VIEW OF EXPANSION JOINT



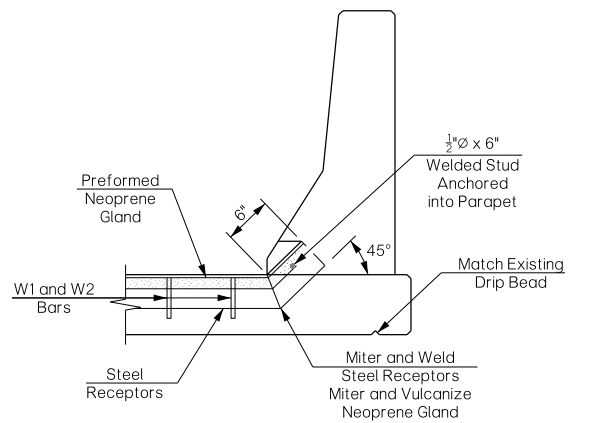
DETAIL 'A'



ELEVATION OF EXPANSION JOINT



PARAPET REINFORCING



SECTION AT PARAPET

- NOTES:
- Clean, straighten and reuse existing Longitudinal Deck Slab and Parapet Reinforcing.
 - This repair will be performed in two phases. The New 'A' Transverse Bars will be tied using Mechanical Splices at the Phasing Joint. The cost of Mechanical Splices will be included in Other Items of Work.

| | | | | |
|--|--------------------|------------------------------|--------------|----------------|
| BRIDGE "A" U.S.-283 OVER WASHITA RIVER | ROGER MILLS COUNTY | Design | MLC | 01/16 |
| REPAIR BRIDGE ITEM (TYPE A) (EXPANSION JOINT REPLACEMENT) AT PIERS) (SHEET 1 OF 2) | | Detail | WDY | 02/16 |
| | | Check | MLC | 04/16 |
| | | Spwad | HARJO | |
| | | Engr. | MOLLA-ESMAIL | |
| STATE OF OKLAHOMA | | DEPARTMENT OF TRANSPORTATION | | SHEET NO. B002 |
| JOB/PIECE NO. 31699(04) | | | | |